

Nordic Dalian



GENERAL

Name	Nordic Dalian
Type	Handysize Seahorse
Built	August 2013
Flag	Liberia
Class	Bureau Veritas
DWAT	37.330 mts on 10,65 m (summer)
TPC	51,0 mt/cm (summer)
Tonnage	24.212 (GT) / 12.860 (NT)
LOA	180,00 m
Beam	30,00 m
Depth	14,70 m

HOLDS & HATCHES

Hatchcover type		TTS Transfolding hatch covers				
Tanktop strength		25 mt/sqm				
		Length	Breadth (fore/aft)	Height	Grain (cbm)	Bale (cbm)
Hatchcovers	No.1	16,00 m	18,70m / 15,00 m			
	No.2	19,20 m	20,30 m			
	No.3	19,20 m	20,30 m			
	No.4	19,20 m	20,30 m			
	No.5	19,20 m	20,30 m			
Cargo holds	No.1	27,40 m	7,80 m / 26,60 m	15,40 m	7.949,00	7.818,00
	No.2	26,00 m	26,60 m	15,40 m	9.789,50	9.525,00
	No.3	26,00 m	26,60 m	15,40 m	9.783,40	9.525,00
	No.4	26,00 m	26,60 m	15,40 m	9.782,60	9.525,00
	No.5	28,20 m	26,60 m / 6,90 m	15,40 m	9.429,50	9.276,00
Total Capacity					46.734,00	45.670,00

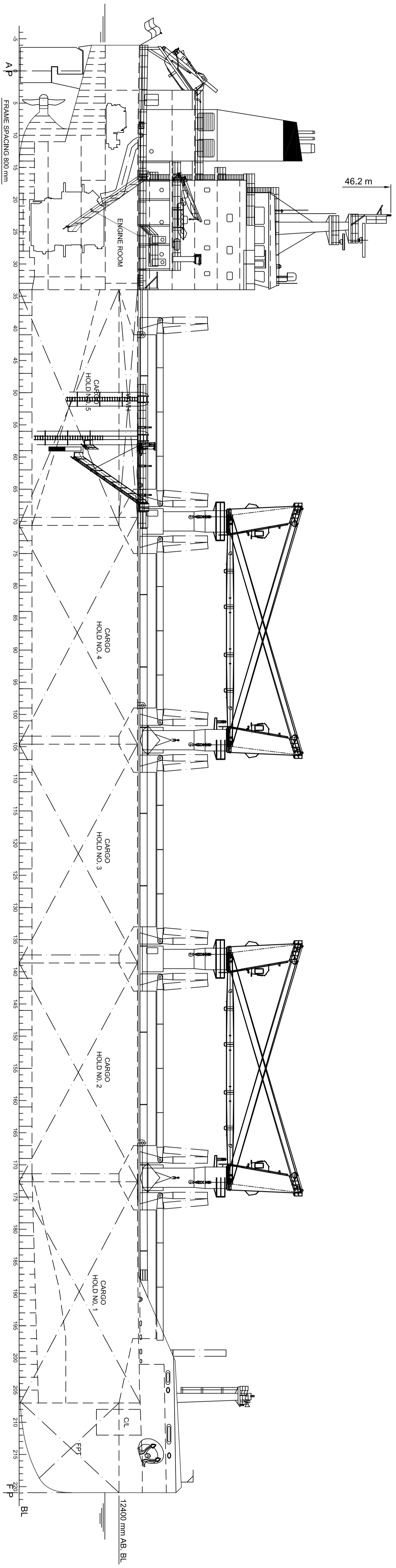
GEAR & ENGINE

Crane type	Electro hydraulic Cranes
SWL	4 x 30mt
Outreach	min. 4 m / max. 26 m
Grabs type	No
Capacity	N/A
Main Engine type	WARTSILA 5RT-FLEX-50D
Output	6985 KW
Aux. Engine type	MAN B&W ZJMD
Output	3 x 600 KW

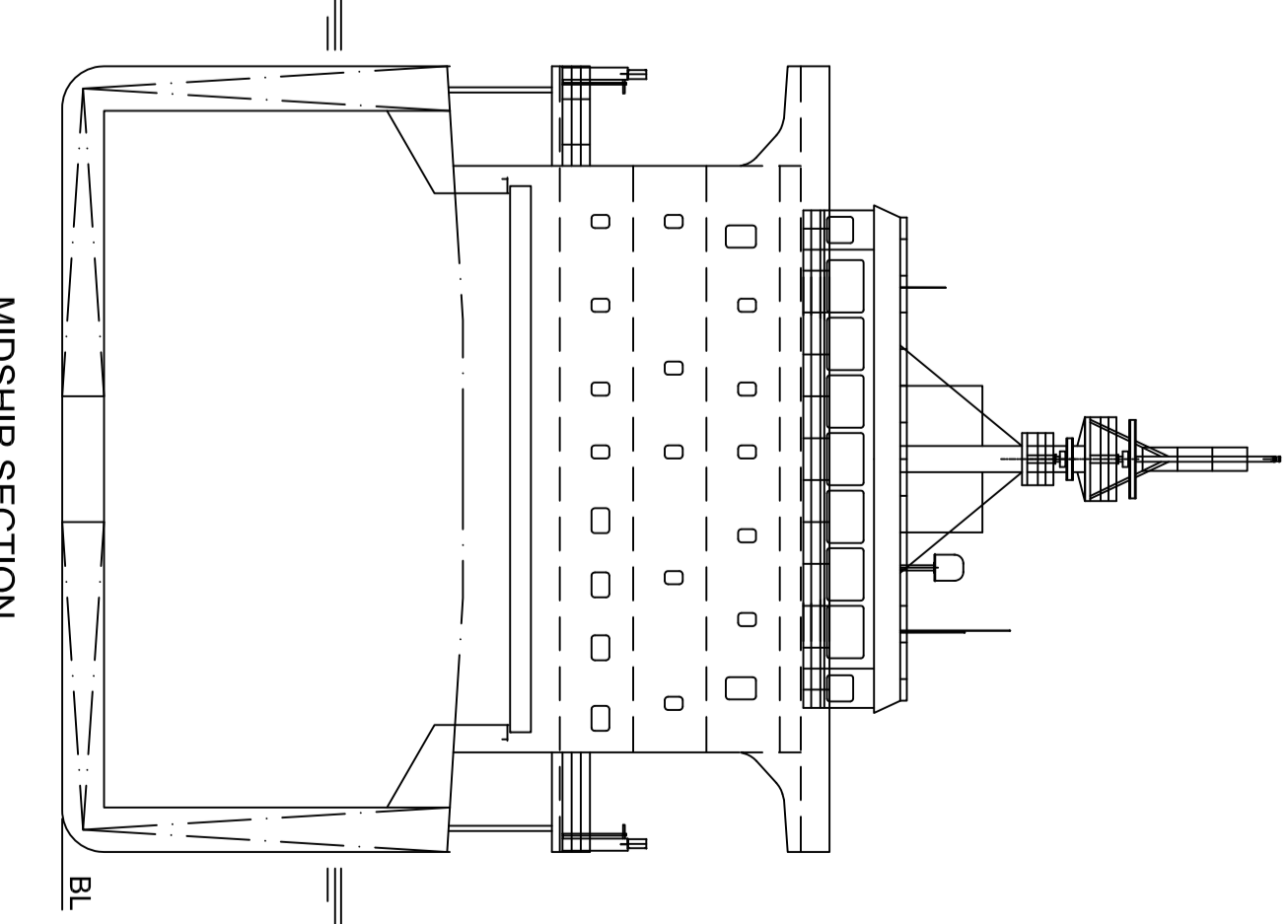
OTHER FITTINGS

Logs fitted	No
Cement holes	5 x 600 mm diameter per hold
Ventilation	Natural
Grain fitted	Yes
CO2 fitted	Yes
A60 bulkhead	Yes
Australian hold ladder	Yes
Strengthened for heavy cargo	Yes

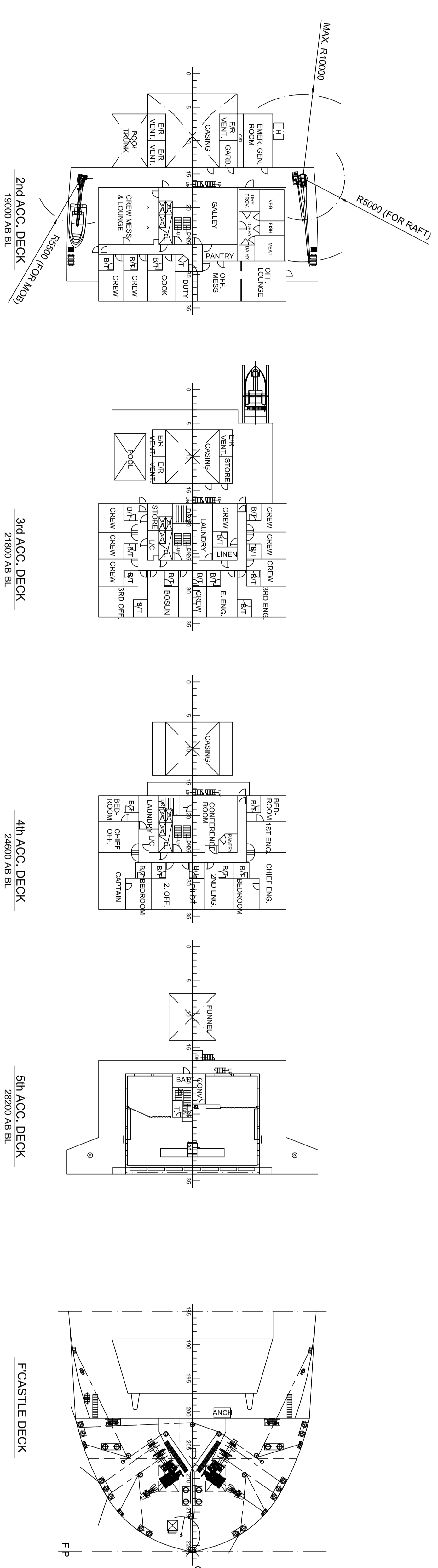
WHEELHOUSE TOP
 31200 mm AB BL
 5th ACC. DECK
 28200 mm AB BL
 4th ACC. DECK
 26200 mm AB BL
 3rd ACC. DECK
 24200 mm AB BL
 2nd ACC. DECK
 22200 mm AB BL
 1st ACC. DECK
 20200 mm AB BL
 UPPER DECK (SIDE)
 14700 mm AB BL
 A-DECK
 10700 mm AB BL
 B-DECK
 7700 mm AB BL
 TANK TOP
 1800/1805 mm AB BL



PROFILE



MIDSHIP SECTION



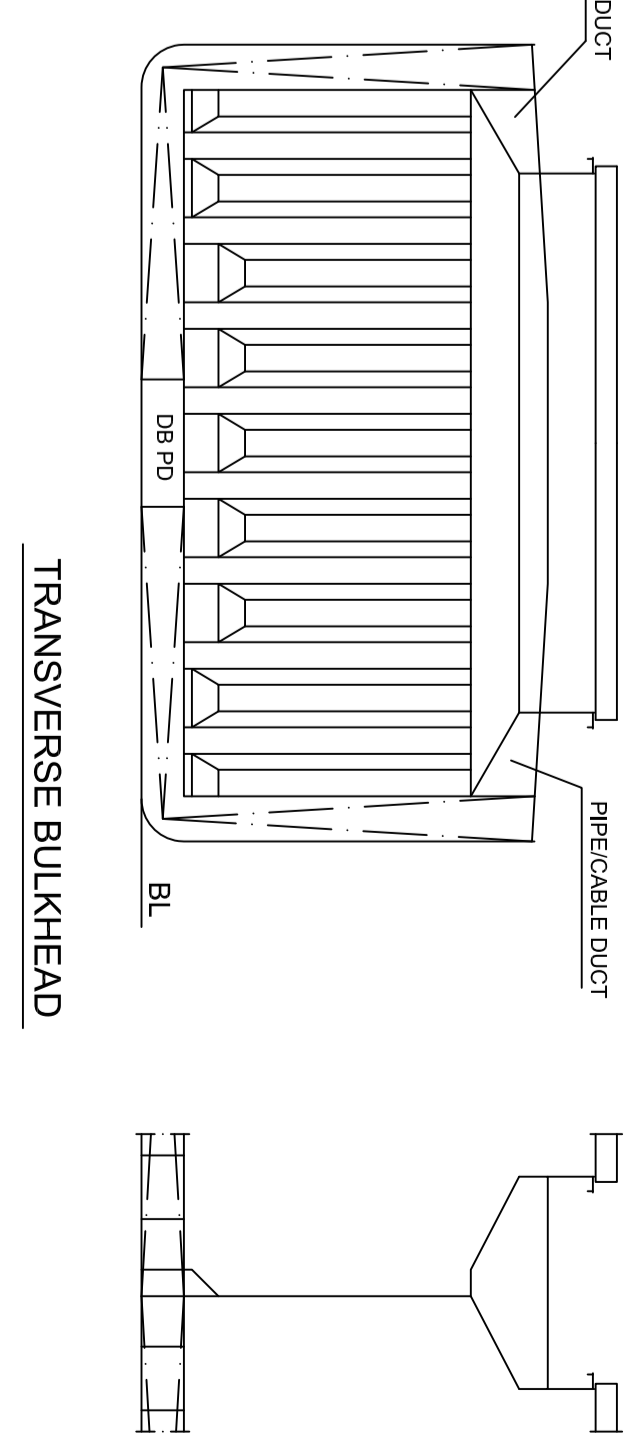
2nd ACC. DECK
18000 AB BL

3rd ACC. DECK
21800 AB BL

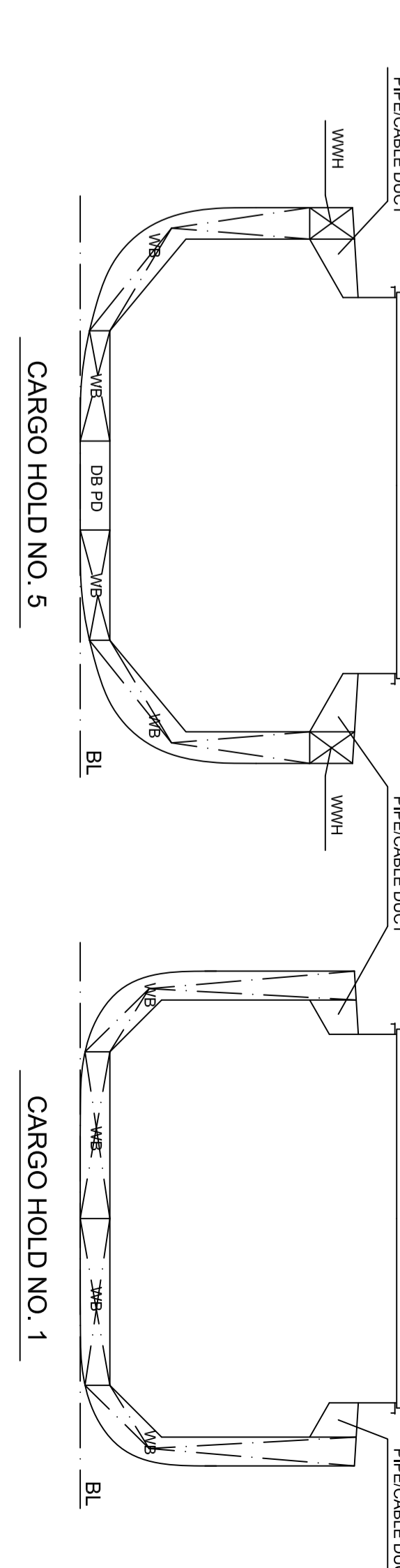
4th ACC. DECK
24800 AB BL

5th ACC. DECK
28200 AB BL

FORECASTLE DECK

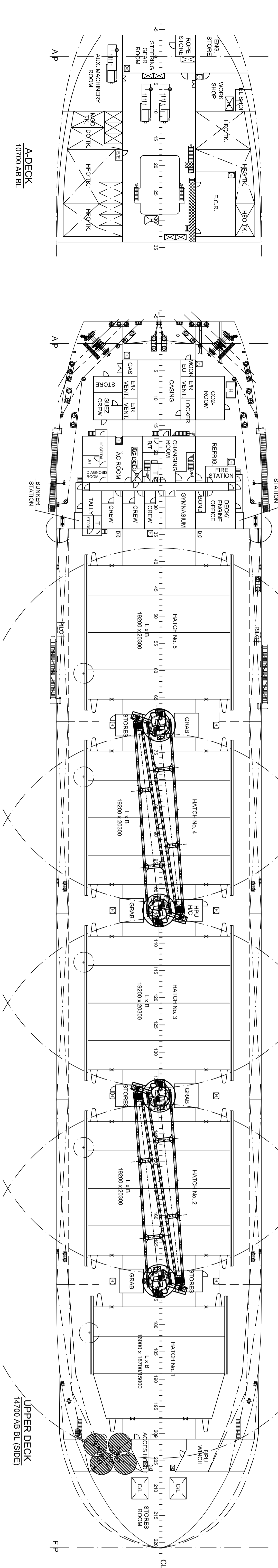


TRANSVERSE BULKHEAD

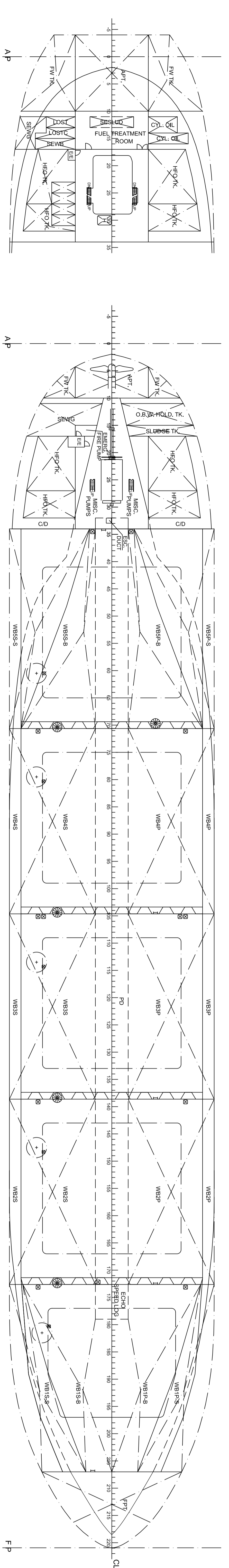


CARGO HOLD NO. 5

CARGO HOLD NO. 1



A-DECK
10700 AB BL



B-DECK
7700 AB BL

TANK TOP
1800/1805 AB BL

SEAHORSE 375 - 37,500 DWT BULK CARRIER

MAIN DIMENSIONS (ALL APPROX.):

LENGTH O.A. MAX.	180.00 m
LENGTH PP APPROX.	176.75 m
RULE LENGTH	174.55 m
BREADTH (MLD)	30.00 m
DEPTH TO UPPER DECK (MLD)	14.70 m
CARGO CAPACITY (100%)	46,700 m ³
DWT (SCANTLING DRAUGHT)	37,500 t
SCANTLING DRAUGHT	10.10 m
CB (SCANTLING DRAUGHT)	10.65 m
SERVICE SPEED (DESIGN DRAUGHT)	0.84
SERVICE SPEED (DESIGN DRAUGHT)	14.00 kn
CORRESPONDING OUTPUT (15% SEA MARGIN)	5,675 kW

CLASS NOTATION:

BV1, +HULL, +MACH, Bulk Carrier CSR, CPS(WBT), ESP, B.C.A. (holds 2 and 4 maybe empty), GRAB20), unrestricted navigation, AUT-DIMS, heavy cargo, MON-SHAFT, INWATERSURVEY

NOTE:

VESSEL IS PREPARED FOR LATER INSTALLATION OF LOG STANCHIONS. THUS, DWT IS REDUCED TO 37,330 t.

Revision	Description	VLB/KAW	DOS	DOS
A	UPDATE DAMAGE STABILITY REQUIREMENTS AND MISC	VLB/KAW	DOS	2012-06-21



Marine
 Naval Architects - Marine Engineers - Surveyors
 Size: 811x594
 Dwg./Eng. LTA
 Control N/A
 Approved Date 2012-05-02
 Dwg. No. 40:5299.01

SEAHORSE 375 - GYSB
 GUOYU SHIPBUILDING NOS.GY203.GY204
 Drawing No. 40:5299.01

GENERAL ARRANGEMENT
 009-01 A