

Nordic Alianca



GENERAL

Name	Nordic Alianca
Type	Handysize Seahorse
Built	April 2014
Flag	Liberia
Class	Bureau Veritas
DWAT	37.188 mts on 10,65 m (summer)
TPC	51,0 mt/cm (summer)
Tonnage	24.212 (GT) / 12.860 (NT)
LOA	180,00 m
Beam	30,00 m
Depth	14,70 m

HOLDS & HATCHES

Hatchcover type		TTS, Electro-hydraulic type				
Tanktop strength		25 mt/sqm				
		Length	Breadth (fore/aft)	Height	Grain (cbm)	Bale (cbm)
Hatchcovers	No.1	16,00 m	18,70 m / 15,00 m			
	No.2	19,20 m	20,30 m			
	No.3	19,20 m	20,30 m			
	No.4	19,20 m	20,30 m			
	No.5	19,20 m	20,30 m			
Cargo holds	No.1	27,50 m	26,00 m	15,10 m	7.949,00	7.818,00
	No.2	26,20 m	26,60 m	15,50 m	9.789,50	9.525,00
	No.3	26,20 m	26,60 m	15,50 m	9.789,40	9.525,00
	No.4	26,20 m	26,60 m	15,50 m	9.789,60	9.525,00
	No.5	28,30 m	26,60 m	15,10 m	9.429,50	9.276,00
Total Capacity					46.734,00	45.670,00

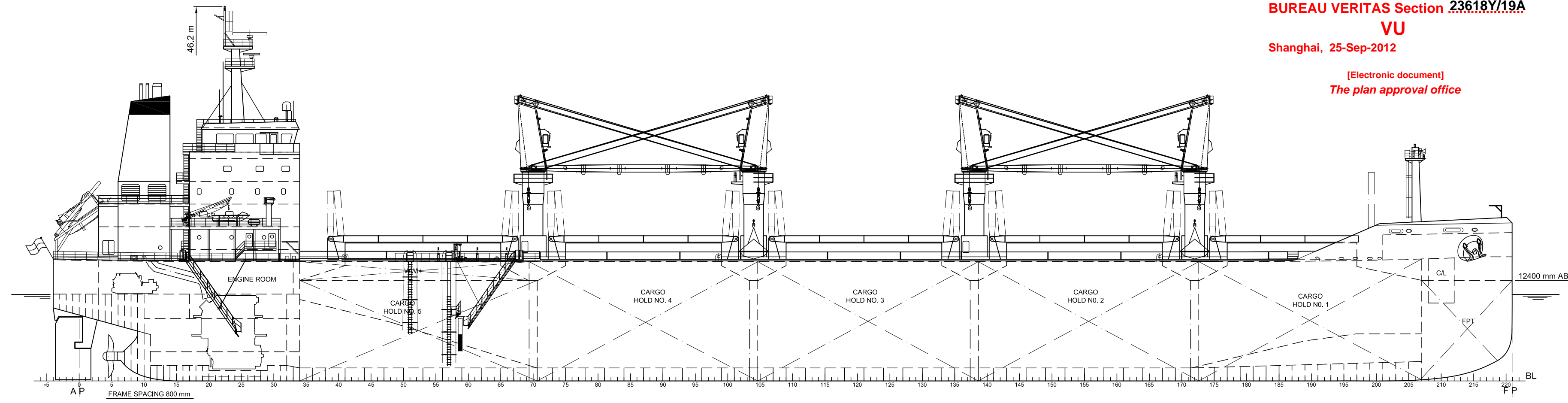
GEAR & ENGINE

Crane type	Electrical hydraulic cranes
SWL	4 x 30 mt each
Outreach	max. 24 m
Grabs type	No
Capacity	N/A
Main Engine type	5RT Flex 50D
Output	6350kW
Aux. Engine type	CME MAN 5L23/30H
Output	3 x 650 kW

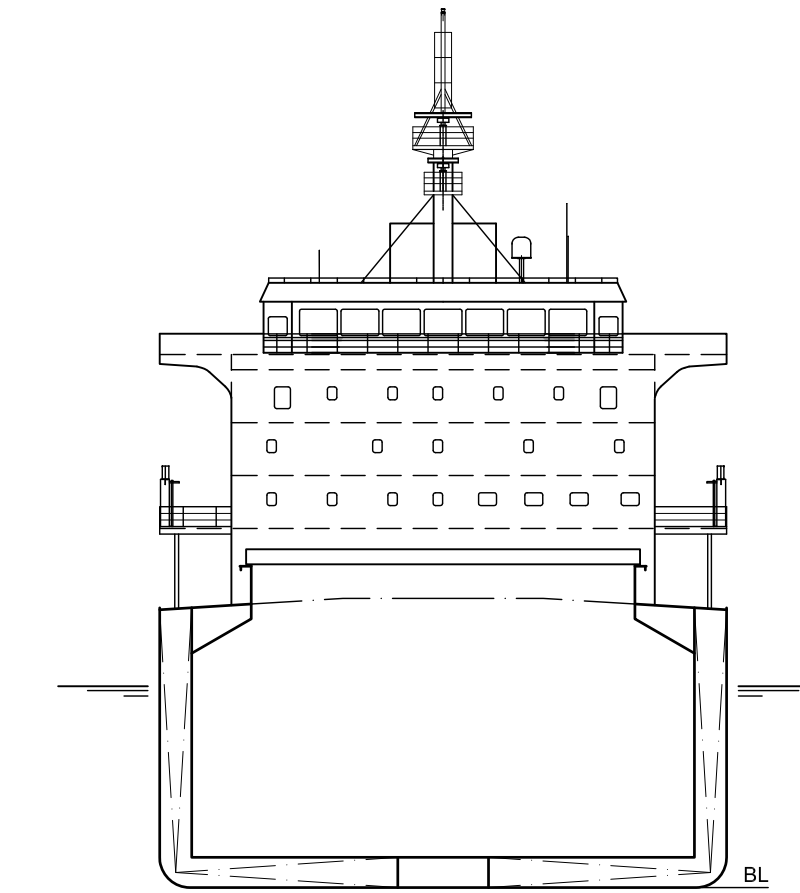
OTHER FITTINGS

Logs fitted	No
Cement holes	5 x 760 mm / 600 mm diameter per hold
Ventilation	Natural
Grain fitted	Yes
CO2 fitted	Yes
A60 bulkhead	Yes
Australian hold ladder	Yes
Strengthened for heavy cargo	Yes

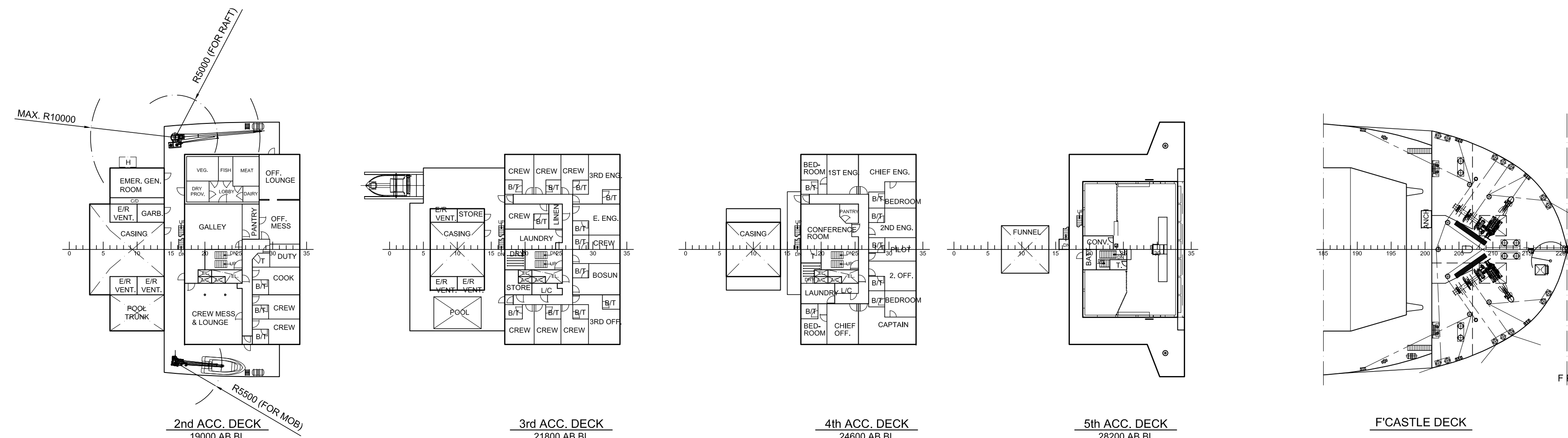
- WHEELHOUSE TOP
31200 mm AB. BL
- 5th ACC. DECK
28200 mm AB. BL
- 4th ACC. DECK
24600 mm AB. BL
- 3rd ACC. DECK
21800 mm AB. BL
- 2nd ACC. DECK
19000 mm AB. BL
- 1st ACC. DECK 16200 mm AB. BL
- UPPER DECK (SIDE)
14700 mm AB. BL
- A-DECK 10700 mm AB. BL
- B-DECK 7700 mm AB. BL
- E/R FLOOR 3750 mm AB. BL
- TANK TOP
1600/1905 mm AB. BL



PROFILE



MIDSHIP SECTION



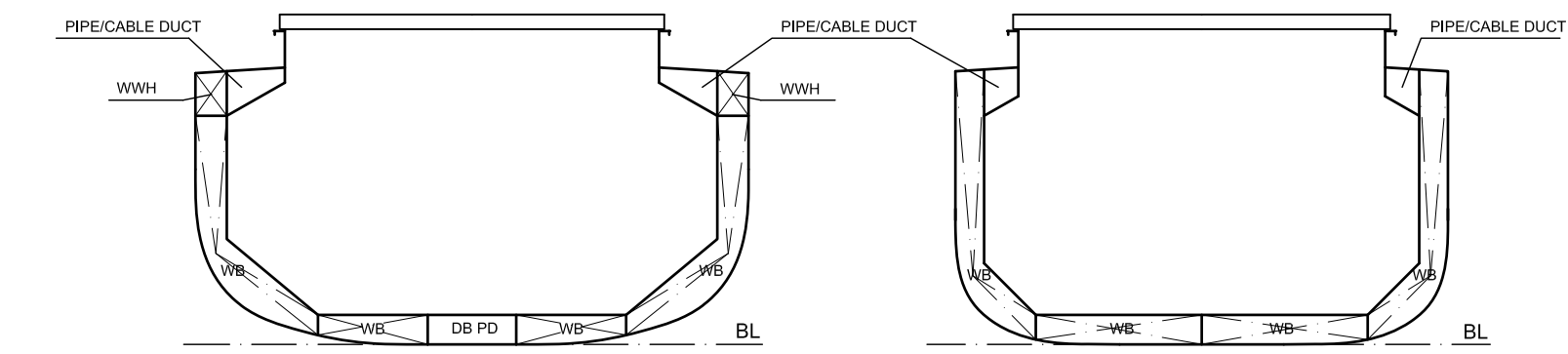
2nd ACC. DECK
19000 AB BL

3rd ACC. DECK
21800 AB BL

4th ACC. DECK
24600 AB BL

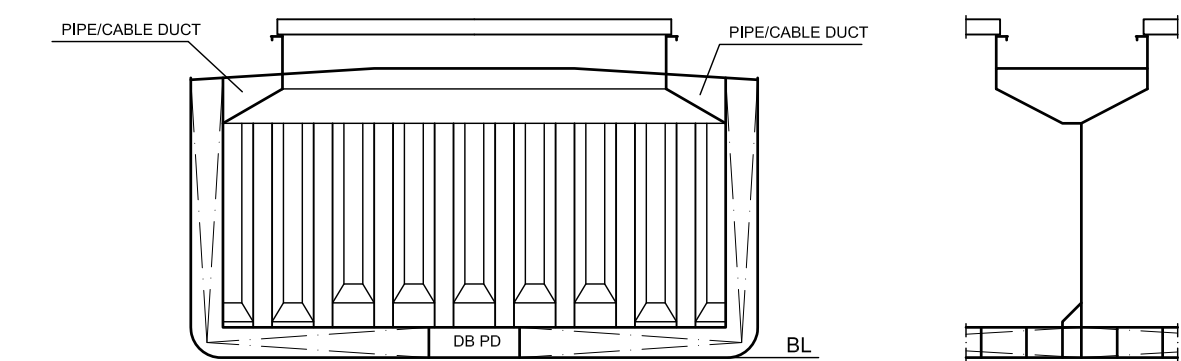
5th ACC. DECK
28200 AB BL

F'CASTLE DECK



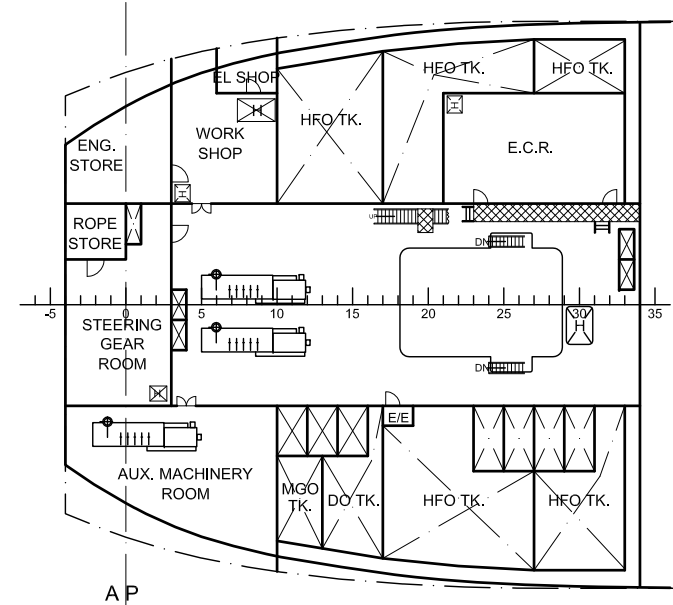
CARGO HOLD NO. 5

CARGO HOLD NO. 1

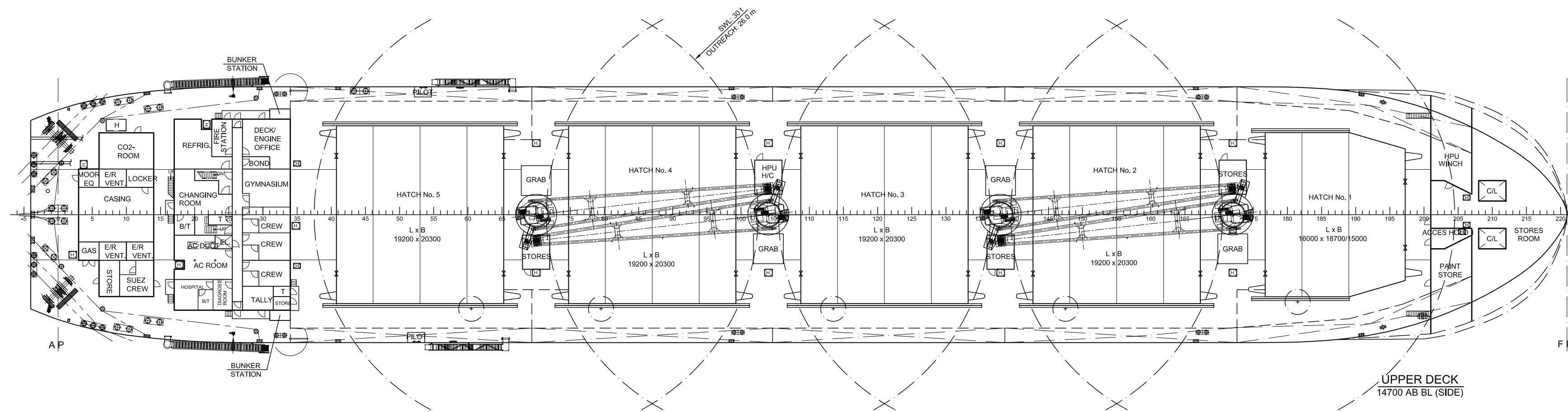


TRANSVERSE BULKHEAD

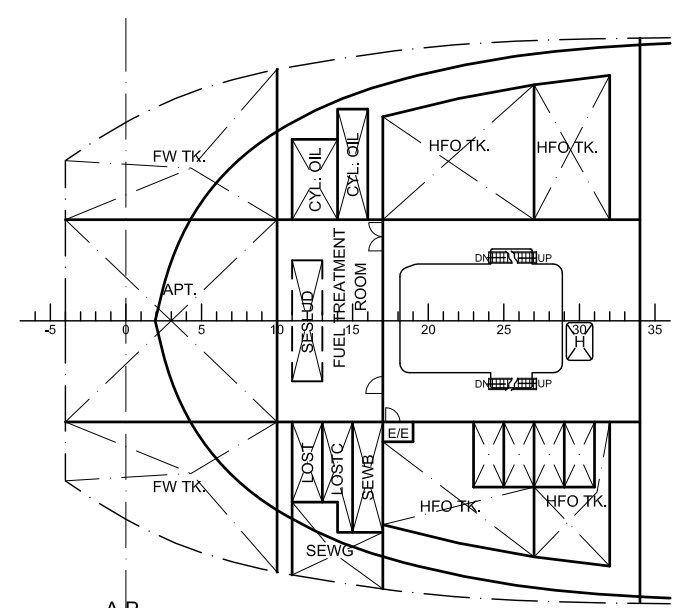
A1 009-01



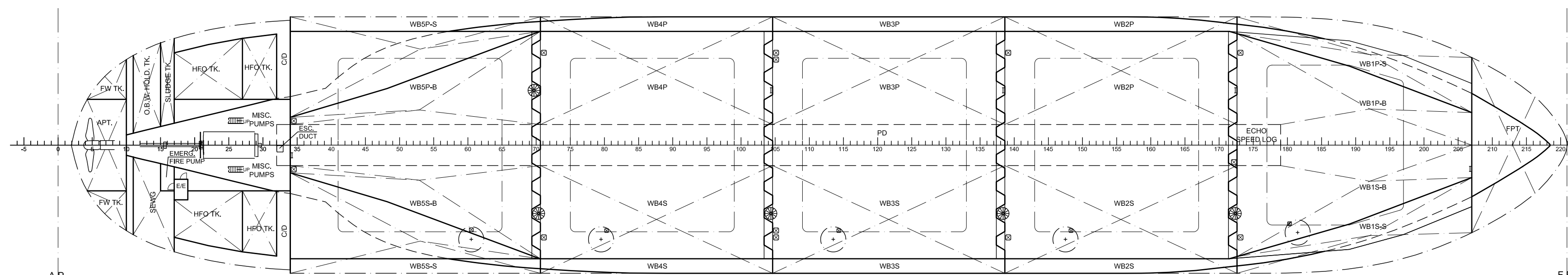
A-DECK
10700 AB BL



UPPER DECK
14700 AB BL (SIDE)



B-DECK
7700 AB BL



TANK TOP
1600/1905 AB BL

SEAHORSE 375 - 37,500 DWT BULK CARRIER

MAIN DIMENSIONS (ALL APPROX):

LENGTH OA MAX.	: 180.00 m
LENGTH PP APPROX.	: 176.75 m
RULE LENGTH	: 174.55 m
BREADTH (MLD)	: 30.00 m
DEPTH TO UPPER DECK (MLD)	: 14.70 m
CARGO CAPACITY (100%)	: 46,700 m ³
DWT (SCANTLING DRAUGHT)	: 37,300 t
DESIGN DRAUGHT	: 10.10 m
SCANTLING DRAUGHT	: 10.65 m
CB (SCANTLING DRAUGHT)	: 0.84
SERVICE SPEED (DESIGN DRAUGHT)	: 14.00 kn
CORRESPONDING OUTPUT (15% SEA MARGIN)	: 5,675 kW

CLASS NOTATION:

BV I, +HULL, +MACH, Bulk Carrier CSR, BC-A (holds 2,4 may be empty), ESP, unrestricted navigation, GRAB[20], AUT-UMS, MON-SHAFT, INWATERSURVEY, CPS(WBT), ICE CLASS IC

NOTE:

VESSEL IS PREPARED FOR LATER INSTALLATION OF LOG STANCHIONS. THUS, DWT IS REDUCED TO 37,000 t.



Marine
Naval Architects - Marine Engineers - Surveyors
Scale 1:400
Size 841x594
Job

Revision/Description	Dgn./Eng.	Control	Approval	Date
-	-	-	-	-
-	-	-	-	-
-	-	-	-	-
-	-	-	-	-
-	-	-	-	-

Dgn./Eng.	LTA	Control	KHU	Approval	DOS	Date	2012-08-15
Job	SEAHORSE 375 - GYSB GUOYU SHIPBUILDING NOS.GY205,GY206			Approval	40.5299.02		Date
Subject	GENERAL ARRANGEMENT			Approval	Drawing No.		

GENERAL ARRANGEMENT

009-01 0